

# YORK AND YORK CO. EDITION

REV. G. W. ENDERS, D. D., EDITOR.

## The Young Lutheran

A MONTHLY JOURNAL

In the Interests of

CHRIST EV. LUTHERAN CHURCH  
(Founded 1783.)

Rev. G. W. Enders, D. D., Pastor,  
Parsonage, 42 South Duke street.

Advertising Rates on Application.

Single Subscriptions, 50 Cents a Year.

Published by the YOUNG LUTHERAN Company  
(Incorporated), Greenville, Pa.

T. B. ROTH, President-Treasurer, Managing Editor.  
H. W. ROTH, Secretary.

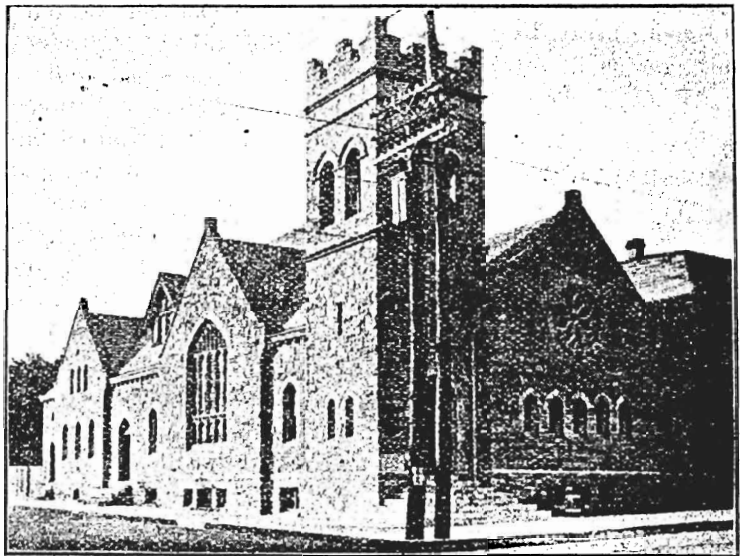
### DEDICATION AT CATONSVILLE, MD.

On Sunday, Oct. 18, 1903, the substantial and imposing new Salem Lutheran church, of which Rev. M. L. Enders is pastor, was dedicated to the worship of God. The dedicatory sermon was preached by Rev. G. W. Enders, D. D.

The building is of Port Deposit granite, with Indiana limestone trimmings, having a green slate roof, with imposing tower, and belfry. It is an architectural beauty of Gothic style. Internally it is beautiful and rich. The brussels carpet, which was donated by the Ladies' Aid society, is a gem, and sets off the interior. The organ, which was donated by the Young People's society, is magnificent in its tone and quality. It is a two-manual, and encased in highly polished oak, ornamented in keeping with church. The acoustic properties of the church are superb. The wood work is all

rich and beautiful. The chancel and altar are of red oak. The pews are of oak and handsomely carved. On the east side of the church is a beautiful memorial window to Rev. Geo. W. Ebeling, who was pastor from 1853-1901. On the west side St. Paul's church of Baltimore have placed quite an artistic window. Other windows are of enoyant glass, quite harmonizing the interior. The Sun-

auditorium and Sunday school room. The church is surrounded by granolithic pavement. The cellar, which extends under the whole building, is light and roomy. Installed therein are two furnaces which supply heat, and water motor which supplies power for organ. The seating capacity of church auditorium is 400, with gallery containing organ and ample room for choir of 25.



SALEM LUTHERAN CHURCH, CATONSVILLE, MD.

day school is at rear of main auditorium, has a primary department in gallery, with a seating capacity of 158, and a seating capacity of 200 on main floor, there is a library to one side of room. The fixtures, for lighting with gas and electricity, are modern in pattern. The pastor's study is very cosy and inviting, and is situated to the left of the pulpit, affording direct communication with pulpit,

This church, so complete in every detail, cost \$30,000. Great credit is due the pastor and Senator John Hubner and the people for undertaking and carrying to its completion this splendid work. Large congregations were present at each of the three services of the day, and \$4,100 was the offering for the day.

At the afternoon service addresses were made by Revs. A.

Bielaski, E. E. Ide, of Catonsville, and Revs. Manhart, Hepsley, L. M. Zimmerman, P. A. Heilman, Wm. Dunbar, J. C. Bowers, E. K. Bell and U. S. S. Rupp, of Baltimore. The money-raising part of the program was intrusted to the able and successful exponent of finances, Rev. G. W. Enders, D. D., of York, Pa. The formal and impressive act of dedication was conducted by Pastor M. L. Enders. The church has a bright and glorious future before it.

C. L. MATTFELDT.