



# THE MONARCH

## Year Two of Salem's Effort to Support the Mar-Lu-Ridge Capital Campaign, "With Open Arms"

### Contributions Will be Received May 11 and May 18

In our first year of Salem's initiative to support the Mar-Lu-Ridge Capital Campaign, we raised over \$89,000, surpassing our original goal of \$75,000. We are now striving to raise \$100,000 for the effort to improve the facilities at the Mar-Lu-Ridge Camp and Conference Center in southern Frederick County. The camp is jointly owned by our Delaware-Maryland Synod and the Metro DC Synod.

We will receive offerings here at Salem on the weekends of May 11 and May 18. There will be special offering envelopes in the worship bulletins, and, of course, you can make a donation online via Salem's website. Please feel free to make a contribution any time during the year, but our emphasis will be on these two weekends.

Mar-Lu-Ridge's "With Open Arms" Campaign has been a great success, receiving support from across the synods. In December, MLR began work on the Ridge Inn accessibility renovations. The contractors have completed the elevator shaft. The elevator itself is being built and prepared for delivery. The upstairs public restrooms have been reconfigured to make them accessible. The tile work will be finished soon. Downstairs is a new public restroom and storage area for the laundry service. Automated doors will be installed as well.



These features have already made a difference as folks see the progress and get excited for the ways the Conference Center will be able to welcome all people into this space very soon. Plans are underway to renovate the Health Cabin in the main camp area on the ridge. MLR is very grateful for Salem's faithful and generous support of this project!

#### Inside This Issue:

<b>Celebrating Pastor Dave</b>	<b>p. 2</b>
<b>Refugee Support</b>	<b>p. 3</b>
<b>Call Process, Faith &amp; Film</b>	<b>p. 4</b>
<b>Children Ministry, Financial Report</b>	<b>p. 5</b>
<b>Equal Exchange</b>	<b>p. 6-7</b>
<b>Youth Pride Night</b>	<b>p. 7</b>
<b>Guardians of Eden</b>	<b>p. 8</b>
<b>Historic Old Salem, Showcase</b>	<b>p. 9</b>
<b>Thank You Messages</b>	<b>p. 10-11</b>
<b>Calendar</b>	<b>p. 12</b>
<b>Official Acts, Leaders</b>	<b>p. 13</b>
<b>Attendance, Technology</b>	<b>p. 14</b>
<b>Leadership, Staff</b>	<b>p. 15</b>

#### MONARCH ON-LINE

Salem's Monarch is available on-line at [www.salem-catonsville.org](http://www.salem-catonsville.org). If you would like notification that a new issue has been posted or would like a Monarch (PDF form) emailed to you, please contact Guy Davis at [guyddavisphd@gmail.com](mailto:guyddavisphd@gmail.com).

## CELEBRATE PASTOR DAVE'S MINISTRY!

Join us in celebrating Pastor Dave's many accomplishments in his ministry at Salem! This will be a potluck dinner and a cash bar will be available. Please bring double portions of dishes as there will be non-Salem guests in attendance. Let's show the broader community our radical hospitality with a full and generous spread of dishes.

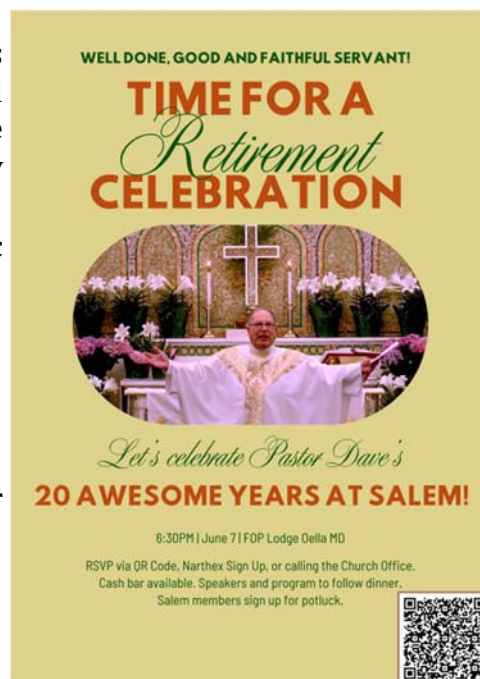
Following the meal, there will be speakers, entertainment, and music glorifying God for Pastor Dave's ministry among us.

### Details:

When: June 7 at 6:30pm, Doors Open at 6pm

Where: FOP Lodge, 2832 Nine Mile Cir, Catonsville, MD 21228

How to Sign Up: QR Code to the right, Narthex Sign Up Sheet, or calling the office Monday thru Friday 9a.m.-3p.m., 410 747-0720



## HONOR PASTOR DAVE THROUGH A SPECIAL GIFT!

If you would like to celebrate Pastor Dave's retirement with a gift, consider a special donation in his honor. All donations will go towards establishing an endowment fund for Lighthouse Inc., a non-profit counseling service near and dear to Pastor Dave's heart. Council will match whatever funds are raised.

Throughout May and June, there will be a special appeal in red bulletin envelopes and on the Vanco webpage. Checks can be made payable to Salem Church; please write "In honor of Pastor Dave" in the memo line. Enclose your gift in the red envelope, placing it in the offering plate.





## WHAT DOES \$123.8 BILLION HAVE TO DO WITH REFUGEES?

Newspapers are filled these days with speculations about savings and spendings of millions and billions of dollars from our federal coffers. Among it all have been outrageous and ridiculous attacks regarding funds for the church's refugee ministries. You may have seen or heard about the claims on X by Elon Musk that Lutheran organizations are engaged in *money laundering* with tax dollars. Such bombastic, baseless tirades would be pathetic and harebrained were it all not so poisonous and cruel. Our government has recently closed entry for *all* refugees and canceled its longstanding ties with those ten agencies which have partnered for many decades with the State Department in resettling refugee and asylees families. (Our Lutheran Global Refuge being the largest of the faith-based agencies.)



So, what has the whole matter of refugees have to do with **\$123.8 billion**? On February 15, 2024, the Department of Health and Human Services released a landmark federal study. It was a groundbreaking 15-year analysis that examined the fiscal contributions of refugees and asylees on the U.S. economy from 2005-2019. The study revealed that collectively, these two groups have contributed a staggering **\$123.8 billion** more than they have cost in governmental expenditures for their initial resettlement, showcasing their economic benefit to the United States.

Refugees and asylees are the most strenuously vetted newcomers to our country, often waiting for years for admission. There are good reasons to reject the current acrimony toward legal immigration, swept into the appeal for nativism. But by our government's definition, refugees and asylees are those who have faced the threat and actuality of personal and national extinction. These are people in exile from their native land. They have chosen because they cannot go home.

Please support refugees with your prayers, your advocacy, and your financial donations to our Lutheran agencies whose care for refugees is all or part of their ministries: Global Refuge (formerly LIRS), Lutheran Social Services/National Capital Area, and Lutheran World Relief. Throughout Eastertide your welcome gifts to Salem's Refugee Fund will be given to these organizations.

## SALEM'S REFUGEE APPEAL

As our Lenten appeal for personal and household supplies for refugee families has drawn to a close, Deacon Emily Orner shared information about its impact.

She wrote, "Every gift is always enough, because together we've been able to provide basic home supplies for all 369 individuals impacted by the stop-work order. Dozens of families in Maryland benefited from access to resources that were donated by Salem Lutheran and other congregations in the DMV area.

In particular, a number of program participants who recently attended an employment assistance event at our Arbutus office were able to take home with them a variety of food staples (such as flour and sugar), hygiene products (like deodorant), and dolls/toys for their children. The shy smile on one little girl's face as she picked out a puzzle and a doll for herself spoke volumes about the impact that every gift has on the individual that ends up receiving it – an opportunity to be seen and valued by their new community".

Deacon Emily concluded, "Words cannot express how grateful we are to Salem for the financial, material, and people support that has been gifted to us for the sake of our newest neighbors. What a powerful example of Christ's loving resistance against those in power who seek to destroy what God holds most dear"!

And finally, a reminder that the appeal for contributions to the Refugee Fund continues through Eastertide. Financial gifts collected are being donated to Lutheran agencies serving refugees, responding to critical needs of families placed in this area.

As always, Salem's generous support of these endeavors is greatly appreciated.

## CALL PROCESS UPDATES FROM YOUR COUNCIL PRESIDENT

Thank you to those who have turned in your church profile questionnaire. If you have not already done this, please complete it so we can get the most accurate picture of the congregation and what we are looking for in our new senior pastor.

Next month, Church Council will interview to hire a part time ( $\frac{3}{4}$ ) interim senior pastor. This pastor will serve at Salem and work together with Pastor Carolyn until we call our new Senior Pastor.

Starting in late summer through early fall the Profile Committee will conduct listening sessions to continue gathering information from the congregation. Data from these sessions, as well as from the profile questionnaire, will be compiled in a Ministry Site Profile, which will then be made available to all ELCA pastors considering a new call. Salem's Call Committee will also be formed during this time.

The synod office will be a resource to us in the following months by helping identify candidates that could be a good fit for our church. Salem's Call Committee will then take the lead by interviewing a group of about five candidates. The committee can decide to move forward with subsequent rounds of interviews for any of the candidates or they can ask for additional candidates to consider if needed.

After the Call Committee has identified the candidate whom it believes has been led to us by God, it will be Church Council's turn to interview the pastor. Once Council makes a recommendation, the candidate will come to Salem to lead worship and the final decision to extend the call is made via congregational vote.

We recognize that this is an emotional time of transition for our church family. Our goal is to call the right senior pastor for Salem. The call process is intended to provide as much time as necessary to reach a prayerful decision. If you have any questions, comments or concerns, please do not hesitate to reach out to me (Emily D'Avella), Pastor Carolyn, or any Council member.

---

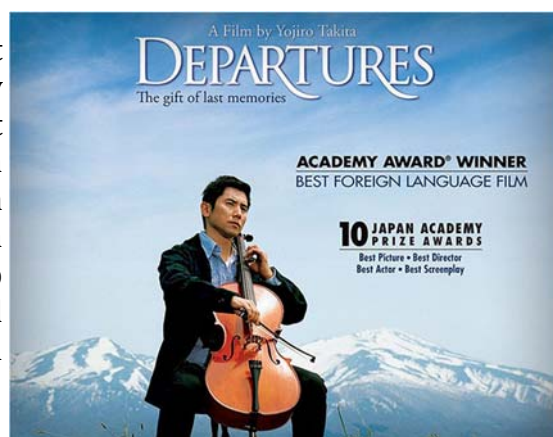
## FAITH & FILM SERIES SPRING 2025

The Faith and Film series is about celebrating life and inspiring each of us through the power of story. Since the advent of the movies, there have been countless stories that have reached in and touched the soul. Consider the power of story to move you along in your journey. Consider the power of story to remind each of us of the importance of faith, hope and love. Consider the potential for the world to be a better place. And consider the possibility that films change people and people change the world. This series will be shown in Reformation Hall at Salem. The community is invited to attend. All showings are at 7 PM. All films are shown with closed captions. All this information and more can be found on the church web page: <https://salem-catoonsville.org> or call the Church Office: 410-747-0720

### DEPARTURES

*Friday, May 9, 2025*

*DEPARTURES* (2008's Oscar winner from Japan for Best Foreign Film) follows Diogo, a devoted cellist in a symphony orchestra that has just been dissolved and who is suddenly left without a job. He decides to move back to his old hometown with his wife to look for work and start over. He answers a classified ad entitled "Departures" thinking it is an advertisement for a travel agency only to discover that the job is actually for a "Nokanshi" or "encoffineer," a funeral professional who prepares deceased bodies for burial and entry into the next life. Rated: PG-13 - 130 minutes



## CHILDREN MINISTRY

During April we focused on Palm Sunday and Holy Week. We discussed why Jesus arrived on a donkey instead of a horse. The children participated in donkey races. They also made children-friendly palms to share with children to use on Palm Sunday. On Palm Sunday the student made Easter egg bird seed ornaments to hang outside to feed birds. We also celebrated with sundaes for Palm Sunday. There was no Sunday school on Easter Sunday, instead Pastor Caroline had an Easter Egg hunt for the children. For the end of April and May we will focus on Evangelism & Sharing (being disciples!). We will have our final Sunday School of the year where we will again do our service project of Birthday Boxes for Catonsville Emergency Assistance. We will be gathering items over the next few weeks. Also, we set up an Amazon gift list so that you can order items and have them sent directly to the church. Items we need are:



- 13 x 9 disposable pans with see-through plastic lids
- Birthday Bags large enough to fit a 13 x 9 pan and ingredients
- 1 box of cake mix (any flavor)
- 1 12 oz can of either Sprite or Coke
- 1 can of icing (any flavor)
- 1 box of birthday candles
- Small container of sprinkles/jimmies



## FINANICAL REPORT FOR MARCH

March		
<b>General Fund</b>		
Receipts to Date	166,479.11	
Expenses to Date	179,583.93	
<b>Difference</b>	<b>13,104.82</b>	
Budget to Date	157,275.00	
<b>R.S.V.P</b>		
Receipts to Date	9,682.00	
Disbursement to Date	16,858.06	
<b>Difference</b>	<b>7,176.06</b>	
(Carryover balance from 2024: \$30485.05)		

## THE HISTORY OF EQUAL EXCHANGE (PART 1)

Written By Greta Merrick

### **Fairness to farmers. A closer connection between people and the farmers we all rely on.**

This was the essence of the vision that the three Equal Exchange founders — Jonathan Rosenthal, Michael Rozyne, and Rink Dickinson — held in their minds and hearts as they stood together on a metaphorical cliff back in 1986.

The three, who had met each other as managers at a New England food co-op, were part of a movement to transform the relationship between the public and food producers. At the time, however, these efforts didn't extend to farmers outside the U.S.

The founders decided to meet once a week — and did so for three years — to discuss how best to change the way food is grown, bought, and sold around the world. At the end of this time, they had a plan for a new organization called Equal Exchange that would be:

- A social change organization that would help farmers and their families gain more control over their economic futures.
- A group that would educate consumers about trade issues affecting farmers.
- A provider of high-quality foods that would nourish the body and the soul.
- A company that would be controlled by the people who did the actual work.
- A community of dedicated individuals who believed that honesty, respect, and mutual benefit are integral to any worthwhile endeavor.

### **No turning back**

It was a grand vision — with a somewhat shaky grounding in reality. But Rink, Jonathan, and Michael understood that significant change only happens when you're open to taking big risks. So they cried "¡Adelante!" (rough translation from the Spanish: "No turning back!") and took a running leap off the cliff. They left their jobs. They invested their own money. And they turned to their families and friends for start-up funds and let them know there was a good chance they would never see that money again.

The core group of folks believed in their cause and decided to invest. Their checks provided the \$100,000 needed to start the new company. With this modest financing in hand, Rink, Jonathan, and Michael headed into the great unknown. At best, the project, which coupled a private business model with a nonprofit mission, was viewed as utopian; at worst it was regarded as foolish. For the first three years Equal Exchange struggled and, like many new ventures, lost money. But the founders hung on; by the third year they began to break even.

### **The changing world of food**

But we're getting ahead of ourselves in the story. In the mid-1980's the world of food was going through major changes. The U.S. public was beginning to see their nation's family farms squeezed out and replaced by industrial-scale, corporate-run agribusinesses reliant on toxic chemical fertilizers, herbicides, and pesticides. As a result, consumer food co-ops who offered their members more organic and locally produced food grew in popularity.

At the same time, the U.S. specialty coffee market was exploding. Coffee aficionados, including many influenced by their travels in Europe, were eager to find and make great coffee here at home. It was not a coincidence that the founders arrived at a strategy to start their venture with fairly traded specialty coffee.



**Café Nica: "The Forbidden Coffee"**

They chose Nicaraguan coffee — which they called Café Nica — as the first Equal Exchange product for a few reasons. In 1986, the Reagan administration imposed an embargo on all products from Nicaragua's Sandinista government. Importing coffee beans from Nicaragua would demonstrate solidarity with the fledgling people's movement and would challenge U.S. trade policies.

Equal Exchange brought Nicaraguan coffee into the U.S. through a loophole in the law. If the coffee was roasted in another country, it could be regarded as a product from that country, and therefore legally imported into the U.S. A friendly Dutch alternative trade organization stepped forward to help with the brokering and roasting.

Alerted to this symbolic action, the Reagan administration tried to stop the tiny organization. Officials seized Equal Exchange's Nicaraguan coffee as soon as it arrived in the port of Boston. During their first two years of business, the founders spent many days, with trade lawyers at their side, battling with customs officials. Each time the coffee cargo was released, it was a small victory.

In 1988, the Office of Foreign Assets Control threatened to close the loophole, and Equal Exchange's founders launched a campaign against the move. Local and national congressmen, such as Rep. Joe Moakley and his dynamic assistant Jim McGovern, provided critical help alongside a groundswell of grassroots support. The result was a victory that made it clear that Equal Exchange wasn't going away. Now Rink, Jonathan, and Michael — and a few new members of the Equal Exchange worker-cooperative — could focus all their efforts on building their alternative business.

(to be continued next month)



---

## GUARDIANS OF EDEN NEWS

Julia Graham organized and hosted an *EV Car Show* on Salem's Parking Lot, *Saturday, April 26<sup>th</sup> from 2 – 4 p.m.* Julia invited Salem members with EVs and/or hybrid cars to participate by sharing their experiences. An information center was set up inside Reformation Hall to provide further information, e.g., charging stations in the Catonsville/Arbutus/Ellicott City areas, tax incentives, costs, and environmental benefits. Contact Julia if you missed the show but want more information regarding the purchase of an EV car {she owns one herself}.

Reservations for another Hart-Miller Island tour have been made. The new date is *Tuesday, September 30<sup>th</sup> from 9 a.m. to noon.* The event is free and carpooling from Salem will be our mode of transport. Contact Norma at [henslerdavis@gmail.com](mailto:henslerdavis@gmail.com) if you'd like to sign up. Space is limited as the group travels by a modest sized boat to the Island itself.

*Our next GOE meeting* will be Monday, May 5<sup>th</sup> at 7 pm at Salem in Reformation Hall. The meeting is open to everyone, especially if you are interested and/or concerned about the environment. Do come! If you missed the May meeting, don't fret, our next meeting will be on Monday, June 2<sup>nd</sup> at 7 pm, same place.

Ken Scarlatelli and Sharon Schueler are Co-Chairs of the GOE committee. Ken also serves on the Board of the nonprofit Serenity Ridge Conservation Area and Arboretum. Reach out to them should you have questions about any of these events.

---

## SOME NOTES ABOUT THE WHITE OAK TREE...

Thanks to a generous donation from Larry Bucher, Salem now has a wonderful White Oak tree growing in our back lawn area. The tree's placement completes a triangle with the 2 Maple trees already growing there. The tree is in memory of Larry's late wife.

The tree was purchased from and planted by Sun Nurseries in late March.

Because of its large size, the tree was a ball and burlap (B&B), not container. Unlike a container tree that includes the tree's root system, a B & B tree is dug out of the ground. This results in most of the tree's root system left in the ground. Therefore, this tree needs to re-establish its root system. So, you will see very little growth in tree size for the first few years.

Since its planting, the tree has received at least 2 gallons of water twice a week. The tree is quite healthy, you can see fresh buds on the branches.

If you're wondering why a White Oak tree, here are just a few reasons why:

- \* Maryland's state tree is the White Oak (*Quercus alba*)
- \* Native tree with highest ecological value
- \* Considered a keystone species because it provides food for more caterpillar species than any other North American plant genus

*If you are wondering why this is important, caterpillars are food for a vast variety of animals.*

- \* A mature oak tree's expansive leaf canopy contributes to the network of trees that act as Earth's "lungs"
- \* Help improve air quality
- \* Trees' evapotranspiration helps offset the heat island effect of parking lots.

*Trees and other green plants use heat from the air to evaporate water, thus cooling the air.*

If you are interested in learning more about oak trees, I recommend the book,

*The Nature of Oaks: The Rich Ecology of Our Most Essential Native Trees* by Doug Tallamy



---

## HISTORIC OLD SALEM NEWS

The Board will host a ***Founders' Day Open House and program (on John Hubner) on Sunday, June 1<sup>st</sup> at 2 pm*** at the Old Salem Church and Cemetery, 701 Ingleside Avenue. If you've never been at Old Salem, our congregation's original worship site built in 1849, now is the time to come see where our congregation worshiped for their first 50 years. It's a walk back in time as the Church is being maintained in its original condition. All are welcome – no reservations required and we always have great refreshments!

We will enjoy *steamed crabs* on board the Dorothy Megan paddle wheel boat out of Suicide Bridge in Hurlock, Maryland on ***Wednesday, August 6<sup>th</sup> for an all-day bus trip***. Cost is \$110 per person which includes bus transportation {departing from the SW Park & Ride Lot on S. Rolling Road} and a three-hour cruise on the Choptank River while enjoying steamed crabs, Maryland crab soup, fried chicken, clam strips, corn on the cob, coleslaw, dessert and non-alcohol beverages. This has always been a great trip with delicious food and a relaxing cruise on the river near Cambridge. Deadline for reservations and money is July 1<sup>st</sup>. The bus is filling up; if you're thinking about going, please contact me soon.

A beautiful fall trip to ***Longwood Gardens on Friday, September 26<sup>th</sup>*** is scheduled where we will have our own personal tour guide, Tim Jennings, to share all the wonderful sights there. Lunch on your own in the Garden's cafeteria with minimal costs. And we're hoping to make a stop at the Amish Markets and Gardens on our way home. More details to follow.

And ***HOLD THE DATE PLEASE*** for our Christmas bus trip on Wednesday, December 3<sup>rd</sup>. We're heading to the Riverside Center for the Performing Arts in Fredericksburg, Virginia. It's a dinner theater with show. We'll be served a delicious meal {with several choices} and enjoy the play "White Christmas". A perfect start for our Christmas celebrations. Have reserved 40 tickets @ \$130 per person; price includes dinner, show, tax, gratuity and transportation. Monies due November 3<sup>rd</sup>; but taking reservations now.

***If you are interested*** in joining the Old Salem Board of Directors or would just like some additional information, please let me know. We welcome everyone to join us. It's not a strenuous responsibility and the members are a wonderful group of people {some Salem and some community members} working together to maintain the Old Salem Church and surrounding cemetery located at 701 Ingleside Avenue.

Our ***next Board meeting is Wednesday, May 21<sup>st</sup> at 7 p.m. at Salem Church***, 905 Frederick Road. Everyone is welcome to attend.

**Contact** Sharon Stanton - memsha7311@gmail.com or call 410-744-8724 for more information and/or to make reservations.

---

## WHAT'S IN THE SHOWCASE

***Pastor Dave*** continued into ***April*** sharing a Holy Week remembrance. ***Pastor Ed*** followed with a beautiful Easter celebration. Did you recognize the two children in the photos at the bottom of the showcase?

***May's*** display will be a special one from ***Robin & Rusty Schaefer***. ***Guy Davis*** shares his beautiful photographs of his and Norma's travels in ***June***.

Want to do a showcase? Any committee-share what your group does or any individual with your own wonderful collection? ***Need volunteers for July, August, September and November***. If you would like to volunteer, please contact Sharon-memsha7311@gmail.com or leave a note with your name and showcase idea in the Historic Old Salem mailbox outside the main church office. I'll contact you.

---

**LUTHERAN  
WORLD RELIEF***Thank You!*

March 24, 2025

Salem Evangelical Lutheran Church  
905 Frederick Rd  
Catonsville, MD 21228-4517

Dear Friends,

Thank you for your congregation's gift of \$1,100.00. I am so grateful for your generous support of Lutheran World Relief! It is because of caring congregations like yours that Lutheran World Relief has been able to serve our hurting world for 80 years, and it is because of your compassion that our ministry together will continue helping children and families who need it most.

I pray that one day, our work together will no longer be needed. I pray that one day, all our neighbors near and far will live in a world free of poverty, injustice and suffering. Until that day, I am grateful to count on your church to answer the call to help people in their time of need. It is no exaggeration to say your generosity truly saves lives and makes a brighter future possible.

Our team loves hearing from you. If you have any questions, please feel free to contact us at 800 597 5972 or at [congregations@lwr.org](mailto:congregations@lwr.org). You'll also find inspiring stories and videos to share with your church at [lwr.org/congregations](http://lwr.org/congregations). And of course, please connect with us on Facebook and Instagram for the latest updates on your impact.

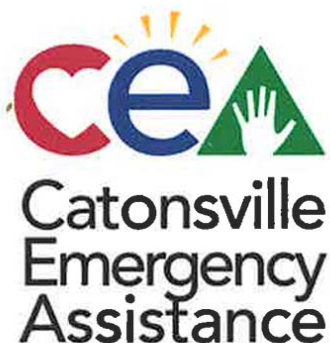
Yours always in Christ,

Ambassador Daniel V. Speckhard  
President and CEO

*Thank you to everyone at Salem who remembered me in prayer, sent cards, messages of get well thoughts, and visits during my recent surgery and recovery. Prayers are powerful!*

*Thank also to Pastor Dave and Carolyn for their visits and reassurances. And also thank you for the lovely altar flowers. They remind me of the love that is Salem!*

*Sincerely,  
Rene Stuebing*



April 8, 2025

Rev David Asendorf  
Salem Lutheran Church  
905 Frederick Rd  
Catonsville, MD 21228

Dear Pastor Dave & Congregation,

Thank you for your donation of \$1,600.00. Catonsville Emergency Assistance continues to serve our neighbors because of the generosity of donors like you!

Your gift will help us meet the challenge of steady growth as an increasing number of neighbors continue to seek our help. We exist to ensure that local families have a place to come when they need food, utility, and eviction assistance. In the past year, we served nearly 700 people in 294 households. As a partner of the Maryland Food Bank, we distributed over 106,000 pounds of fresh and shelf-stable food as well.

Thank you for your commitment to our mission of **Neighbors Helping Neighbors!**

With heartfelt gratitude,

*Caitlin Kirby*

Caitlin Kirby  
Executive Director

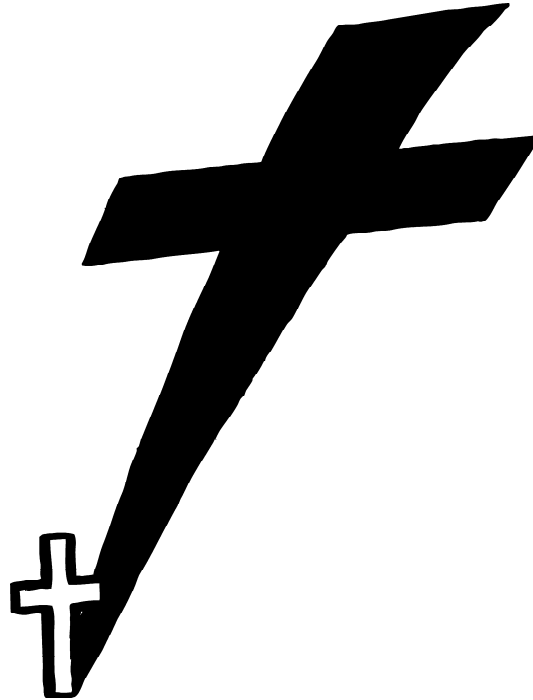


To Everyone,  
Many thanks for the prayers, the flowers, the cards and meals during this recent post-operation.  
The meals were superb! And the flowers were just beautiful. I loved each and every card and am grateful for a caring group of people, and for the many prayers. Again, thank you,  
Norma



Sun	Mon	Tue	Wed	Thu	Fri	Sat
27	28	29	30	1	2	3
8:15am - Early Service 9:30am - Adult Forum 9:30am - Salem Choir 9:30am - Sunday School 11am - Late Service 5:00pm - Evening Confirm.	4pm - Yoga 7pm - AA Women's Group 7pm - Brass Quintet 7pm - Centering Prayer 7pm - Guardians of Eden 7pm - Prayer Stitches	4pm - Girl Scout Troop 4:30pm - Girl Scout Troop 7pm - Heart of Maryland 7pm - Zoom Fellowship 7:15pm - Salem Bell Choir	6am - AA Meeting 8am - Men's Prayer 10am - Salem Quilters 4pm - Chair Yoga 5:30pm - AA Meeting 6:30pm - Girl Scout Troop	8am - Business Builders 10am - Stitchcrafters 6pm - St. David's Choir 7pm - Trombone Practice 7:30pm - Salem Choir	12pm - AA Group 5:30pm - Girl Scout Troop 6pm - Girl Scout Troop 7pm - Faith & Film Series (Departures)	5pm - Contemporary Service
4	5	6	7	8	9	10
8:15am - Early Service 9:30am - Adult Forum 9:30am - Salem Choir 9:30am - Sunday School 11am - Late Service 5:00pm - Evening Confirm.	4pm - Yoga 7pm - AA Women's Group 7pm - Brass Quintet 7pm - Centering Prayer 7pm - Guardians of Eden 7pm - Prayer Stitches	4pm - Girl Scout Troop 4:30pm - Girl Scout Troop 7pm - Heart of Maryland 7pm - Zoom Fellowship 7:15pm - Salem Bell Choir	6am - AA Meeting 8am - Men's Prayer 10am - Salem Quilters 4pm - Chair Yoga 5:30pm - AA Meeting 6:30pm - Girl Scout Troop	8am - Business Builders 10am - Stitchcrafters 6pm - St. David's Choir 7pm - Trombone Practice 7:30pm - Salem Choir	12pm - AA Group 5:30pm - Girl Scout Troop 6pm - Girl Scout Troop 7pm - Faith & Film Series (Departures)	8am - Dumpster Day 5pm - Contemporary Service
11	12	13	14	15	16	17
8:15am - Early Service 9:30am - Adult Forum 9:30am - Salem Choir 9:30am - Sunday School 11am - Late Service 12:30pm - Salem Brass	4pm - Yoga 7pm - AA Women's Group 7pm - Centering Prayer 7:30pm - Nar-Anon 7:30pm - Overeater's Anon	4pm - Girl Scout Troop 4:30pm - Girl Scout Troop 6pm - Salem Tech 7pm - Heart of Maryland 7pm - Zoom Fellowship	6am - AA Meeting 8am - Men's Prayer 10am - Salem Quilters 4pm - Chair Yoga 5:30pm - AA Meeting 7pm - Old Salem Board	8am - Business Builders 10am - Stitchcrafters 11am - Bent Twig Garden 6pm - St. David's Choir 7pm - Trombone Practice 7:30pm - Salem Choir	12pm - AA Group 5:30pm - Girl Scout Troop	5pm - Contemporary Service
18	19	20	21	22	23	24
8:15am - Early Service 9:30am - Adult Forum 9:30am - Salem Choir 9:30am - Sunday School 11am - Late Service 12:30pm - Salem Brass	4pm - Yoga 7pm - AA Women's Group 7pm - Centering Prayer 7pm - Prayer Stitches 7:30pm - Nar-Anon 7:30pm - Overeater's Anon	4pm - Girl Scout Troop 4:30pm - Girl Scout Troop 7pm - Church Council 7pm - Heart of Maryland 7pm - Zoom Fellowship 7:15pm - Salem Bell Choir	6am - AA Meeting 8am - Men's Prayer 10am - Salem Quilters 4pm - Chair Yoga 5:30pm - AA Meeting 6:30pm - Girl Scout Troop	8am - Business Builders 10am - Stitchcrafters 6pm - St. David's Choir 7pm - Trombone Practice 7:30pm - Salem Choir	12pm - AA Group 5:30pm - Girl Scout Troop	5pm - Contemporary Service
25	26	27	28	29	30	31
8:15am - Early Service 9:30am - Adult Forum 9:30am - Salem Choir 9:30am - Sunday School 11am - Late Service 12:30pm - Salem Brass	1pm - Luke Bible Study 4pm - Yoga 7pm - AA Women's Group 7pm - Centering Prayer 7:30pm - Nar-Anon 7:30pm - Overeater's Anon	4pm - Girl Scout Troop 4:30pm - Girl Scout Troop 7pm - Heart of Maryland 7pm - Zoom Fellowship 7:15pm - Salem Bell Choir	6am - AA Meeting 8am - Men's Prayer 10am - Salem Quilters 4pm - Chair Yoga 5:30pm - AA Meeting 6:30pm - Girl Scout Troop	8am - Business Builders 10am - Stitchcrafters 6pm - St. David's Choir 7pm - Trombone Practice 7:30pm - Salem Choir	12pm - AA Group 5:30pm - Girl Scout Troop	5pm - Contemporary Service

---

**OFFICIAL ACTS****AT THE WEDDING ALTAR***Stephanie Kathryn Hargest and Marcus Aaron Tracy**03/29/2025*

---

**PARISH LEADERS**

Altar Guild: Mary Krebs

Archive Committee: Judy LeGath

Arts Committee: Vacant

Child Protection Committee: Linda Fleischer

Children's Ministry Committee: Eileen Merriman,  
Zoë DellChristian Fellowship Committee: Darla Sando, Pam  
Wilsey

Communications Committee: Guy Davis, Karen Amy

Evangelism Committee: Nicki Fatherly

Finance Committee: Ken Wolfram

Guardians of Eden: Ken Scarlatelli, Sharon Schueler

Health Resources: Beth Rodgers, Lynda Bell

Historic Old Salem: Sharon Stanton

Memorial and Bequests: Paul W. Krabitz

Mutual Ministry (Pastor Asendorf): Vacant

Prayer Tree Coordinators: Karen Amy, Barbara  
Beem

Property: Rusty Schaefer

Salem Players: Lisa Yerkey

Scholarship: Sue Gdovin

Social Ministry: Mary Kay Willing

Stewardship Committee: John Brohawn

Technology Support Committee: Lisa Yerkey

Ushers: Mary Krebs, Ray Hamelin

Youth Ministry Committee: Melissa Miller and  
Veronica Merriman

Worship Life: Jane Stolte

**ATTENDANCE REPORT FOR MARCH AND APRIL 2025**

	Saturday Evening	Sunday Service		Other	Livestream	Weekly* Total
		First	Second			
Mar 22/23	28	54	101		9/33**	300
Mar 26				56	19**	
Mar 29/30	25	63	106		7/11	276
Apr 2				50	14	
Apr 5/6	22	46	122		12/39	326
Apr 9				64	21	
Apr 12/13	33	95	142		10/54	560
Apr 17				26/55***	7/18***	
Apr 18				30/64***	13/13***	
Apr 19/20	40	124	218		19/56	457

\*Week reflects Saturday through Friday

\*\*Livestream data have been updated since the last Monarch

\*\*\* Services were held at 2:00 pm and at 7:30 pm

**WIFI AT SALEM**

The Technology Committee has installed WIFI access throughout the church. This free internet access is available to members and guests. Users may access any of our four networks connections throughout the building. The password for all connections is **SalemChurch**.

If you have any questions about our network please contact the Technology Committee, Lisa Yerkey, at [salemtch@saalem-catonsville.org](mailto:salemtch@saalem-catonsville.org).

**SMART PHONE QR CODE****AVAILABLE FOR GIVING**

Salem allows offerings via your smart phone. Image Salem's QR code and you will be taken to the mobile-friendly version of Salem's giving page where you can make your gift via your bank account or credit card.





**ADMINISTRATIVE STAFF**

Salem Evangelical Lutheran Church Office  
Telephone: (410) 747-0720

Pastor David K. Asendorf  
pastordave@salem-catonsville.org

Pastor Carolyn Lawrence  
pastorcarolyn@salem-catonsville.org

Pastor Emeritus: G. Edward Whetstone  
edward-victoria@verizon.net

Director of Music: Mary Miller  
marymiller359@gmail.com

Director of Contemporary Music: Sid Meier

Worship Technology Director: Joey Morgan

Office Manager: Jeff Tsai  
jefft@salem-catonsville.org

Sextons: Letty Monahan  
Joey Morgan

**CHURCH COUNCIL LEADERSHIP**

President: Emily D'Avella

Vice-President: Lisa Yerkey

Secretary: Matthew Fairchild

Financial Secretary: Linda Fleischer

Treasurer: Ray Hamelin

Assistant Treasurer: Jane Stolte

**CHURCH COUNCIL**

Ron Bruce  
Emily D'Avella  
Guy Davis  
Matthew Fairchild  
Ray Giuliani  
Pat Jennings

Veronica Merriman  
Carolyn Moore  
Mary Oliver  
Michael Petry  
Janet Van Sant  
Lisa Yerkey

**COMMUNICATIONS COMMITTEE AND CONTRIBUTING STAFF**

Guy Davis, Co-Chair  
Karen Amy, Co-Chair  
Barbara Beem  
Peggy Dell  
Carolyn Lawrence  
Judy LeGath  
Joey Morgan  
Sharon Stanton  
Bethann Snyder  
Ed Whetstone

**Contributing Photographers**  
Guy Davis

**Proofreading**  
Sharon Stanton

**NEXT MONARCH PUBLICATION**

**June 2025**

If you are interested in participating on the Communications Committee, or contributing as a *ad-hoc* writer or photographer, please contact our committee chairpersons.



*Salem Evangelical Lutheran Church strives to be a Christ-centered, caring community experiencing God's grace and sharing God's goodness with all people.*

905 Frederick Road  
Catonsville, MD 21228-4517  
(410) 747-0720  
[office@salem-catonsville.org](mailto:office@salem-catonsville.org)

We are on the Web!

[www.salem-catonsville.org](http://www.salem-catonsville.org)



[www.facebook.com/salemlutheranchurch.catonsville](http://www.facebook.com/salemlutheranchurch.catonsville)



Evangelical Lutheran Church In America  
[www.elca.org](http://www.elca.org)



Delaware-Maryland Synod  
<http://demdsynod.org/>

---

## SALEM EVANGELICAL LUTHERAN CHURCH

---

905 Frederick Rd.  
Catonsville, MD 21228-4517

Change Service Requested  
**TIME VALUE**